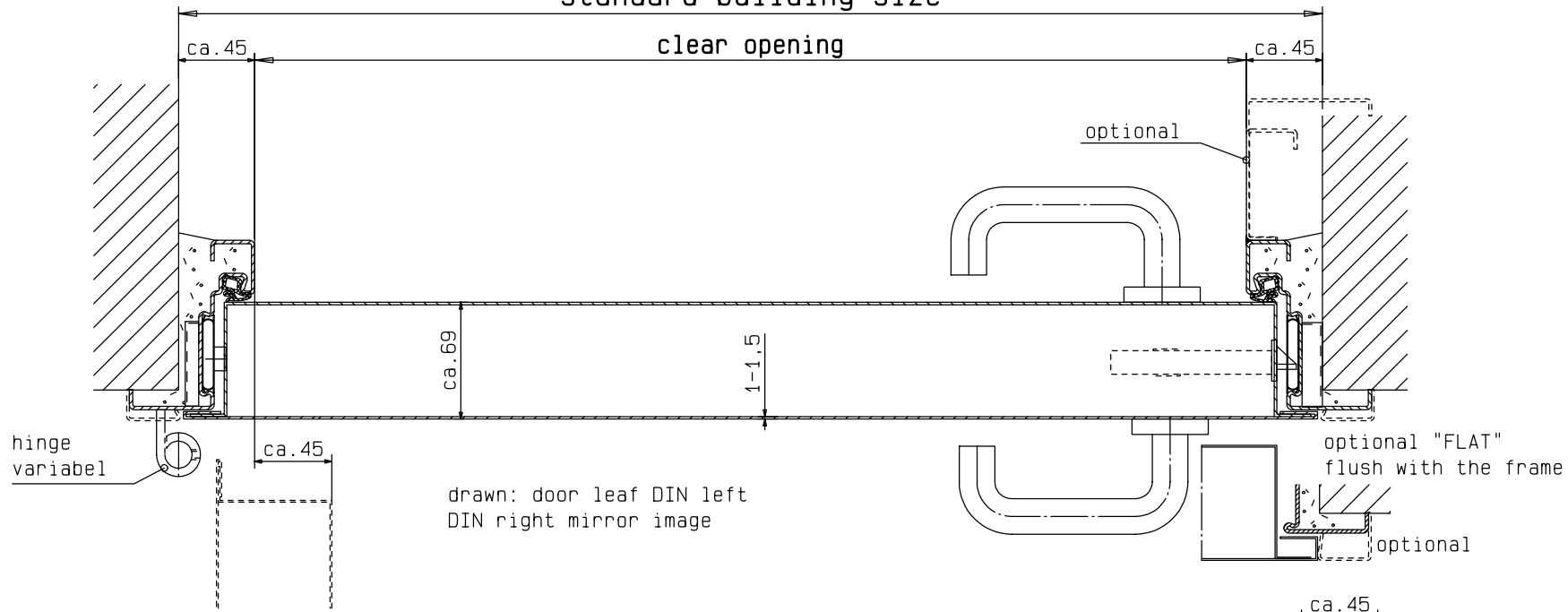
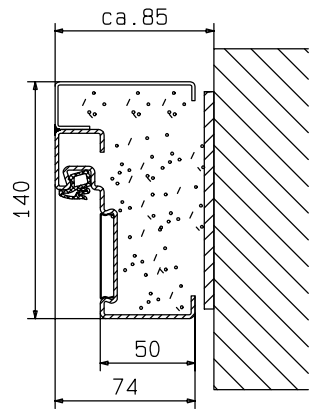


standard building size

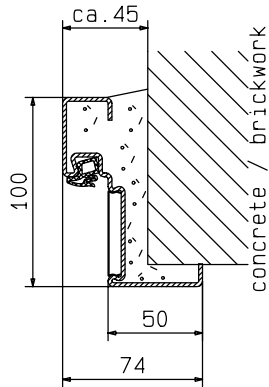
clear opening



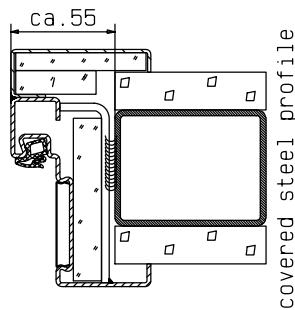
drawn: door leaf DIN left  
DIN right mirror image



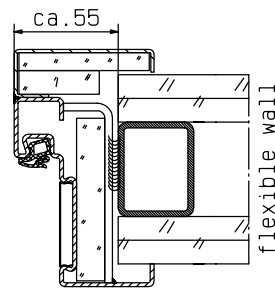
main frame "ZNG 68/76"



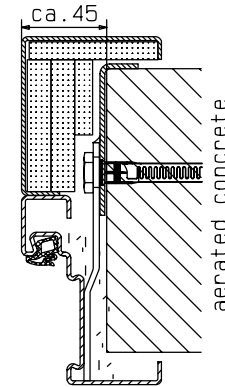
optional frame  
"ZNG 58/76"



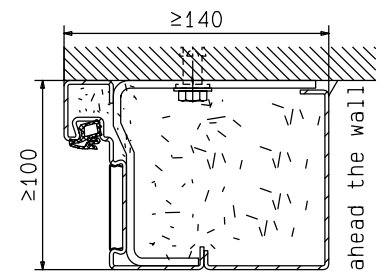
covered steel profile



flexible wall



aerated concrete



ahead the wall

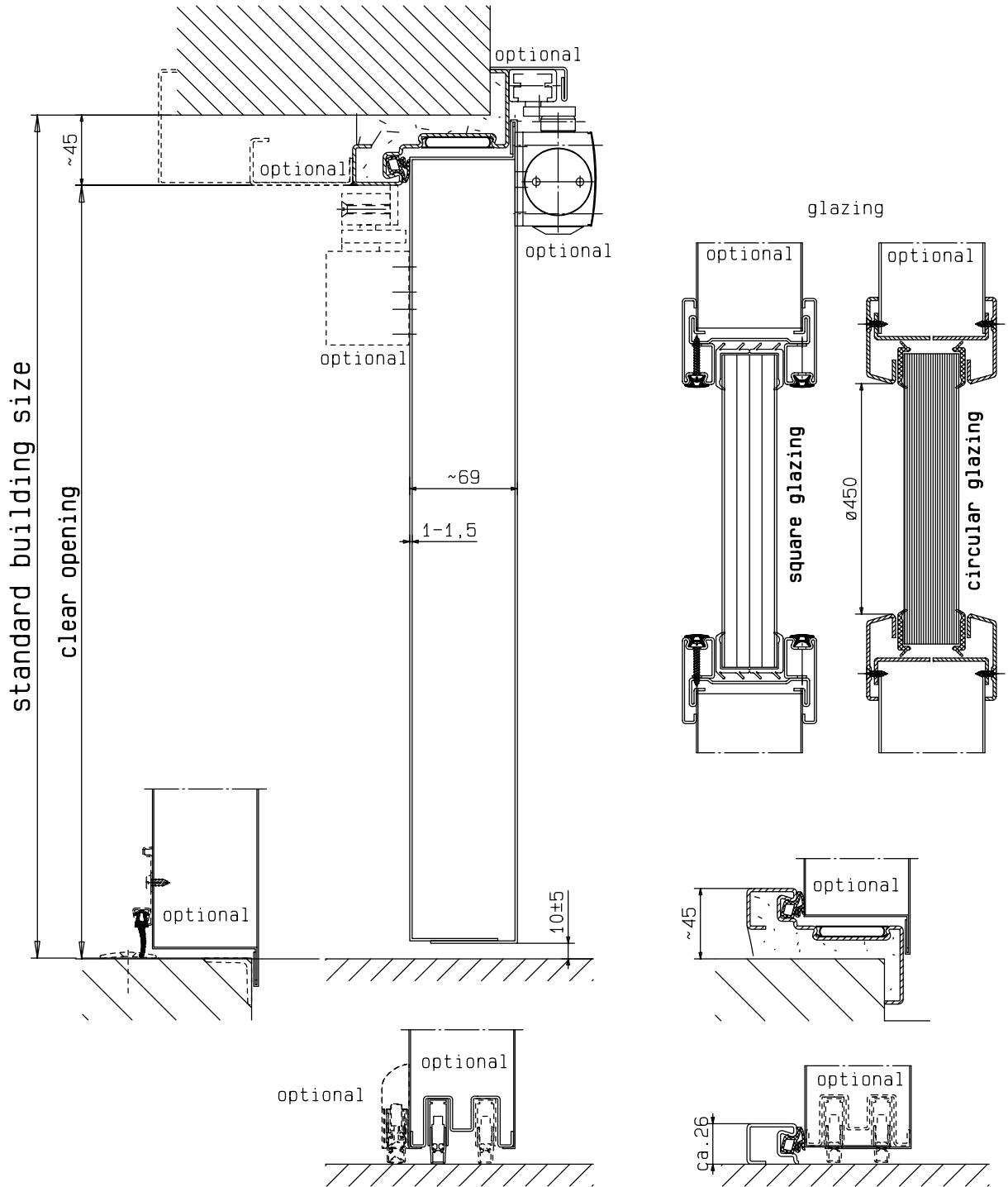
detail of glazing  
see at vertical cross-section

01.07.2020

**System Schröders**  
Innovation Tür und Tor

Gerhard-Welter-Straße 7; D-41812 Erkelenz

**single leaf steel fire door**  
**EI290/E90/EW60-C5-S2(S200)**  
**"System Schröders TSN-11"**  
horizontal cross-section



Also deliverable as an external door  
CE-marked according to EN 14351-1

details of fitting or frame  
see at horizontal cross-section

**System Schröders**  
Innovation Tür und Tor

Gerhard-Welter-Straße 7; D-41812 Erkelenz

**single leaf steel fire door**  
**EI290/E90/EW60-C5-S<sub>a</sub>(S<sub>200</sub>)**  
**"System Schröders TSN-11"**  
vertical cross-section