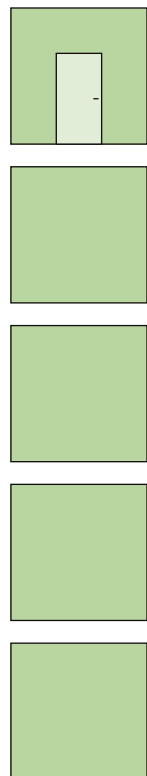


Technical Information

System Schröders EIS-11

Single-leaf steel fire door
EI₂ 120 / E 120 / EW 60 (Sa)

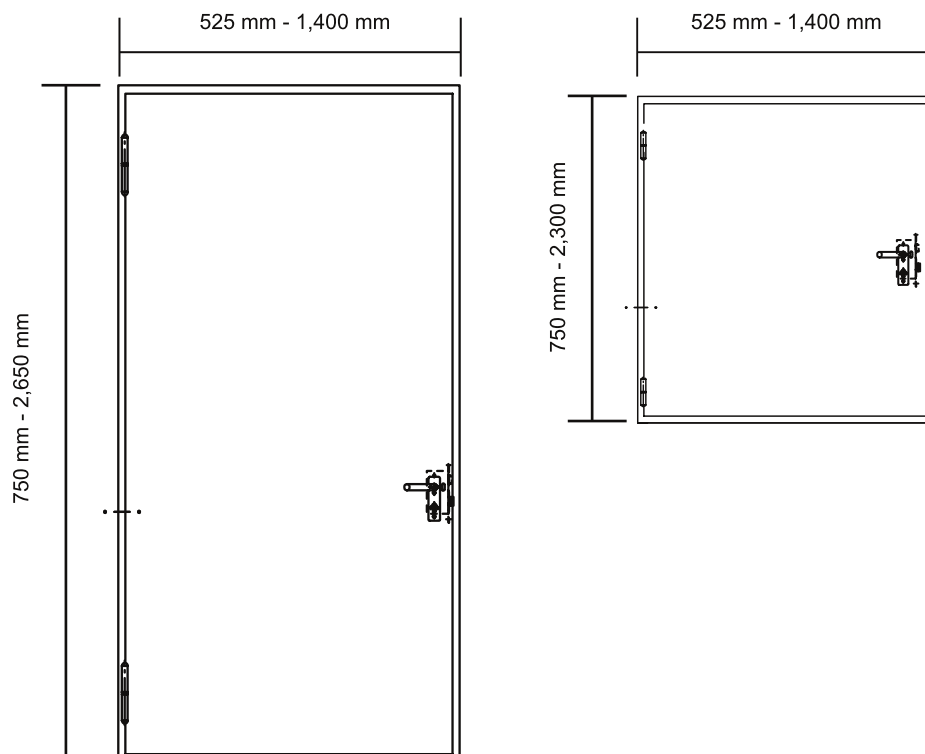
according to EN 1634-1
EN 1634-3
EN 13501-2



Fire Door "System Schröders EIS-11"

- **Fire resistance** EI₂ 120 / E 120 / EW 60
tested in accordance with EN 1634-1

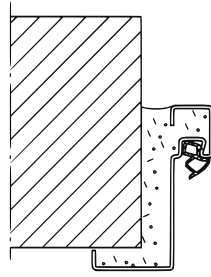
Classification report WFRC 360408 according to EN 13501-2
- **optional performance characteristics**
 - **Air tightness** according to EN 12207, up to class 4
 - **Resistance to wind load** according to EN 12210, up to class C5
 - **Watertightness** according to EN 12208, class 8A
 - **Resistance to positive and negative pressure** to 5,000 Pa
 - **Smoke control** Sa tested in accordance with EN 1634-3



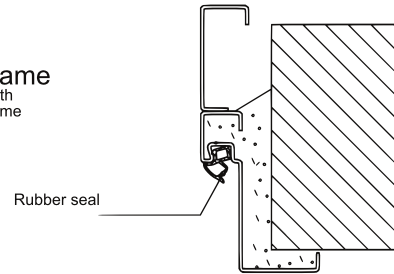
Installation Variants

Installation in

Masonry /
concrete

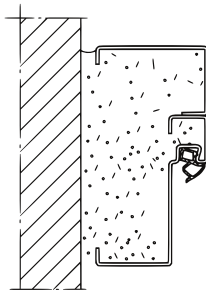


Corner frame
Corner with
counter frame



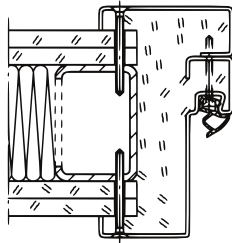
Rubber seal

Masonry /
concrete



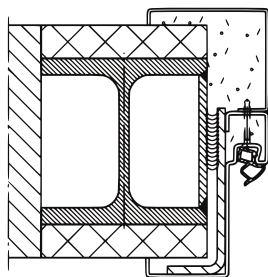
Block frame
Corner with
counter frame

Flexible wall



Wrap-around frame
Corner with
counter frame

Covered
steel columns /
steel beams



Wrap-around frame
Corner with
counter frame

